



ASHE Advocacy Liaison Meeting

29 October 2020

© 2020 American Society for Health Care Engineering,
a professional membership group of the American Hospital Association
155 N. Wacker Drive, Suite 400 | Chicago, IL 60606
ashe.org | ashe@aha.org | 312-422-3800



Agenda

1. Welcome – who's been invited
2. NFPA Update by Jim Peterkin
3. Categorical prioritization of topics based on the following categories:
 - a. Infection Prevention/Control Issues
 - b. Construction Issues
 - c. Planning & Design Issues
 - d. Operations & Maintenance Issues
 - e. Regulatory Issues
 - f. Administrative Issues
 - g. Facility Safety Issues
 - h. Financial Issues
 - i. Emergency Management Issues
 - j. Sustainability Issues
 - k. Hazardous Communications Issues
 - l. Security Issues
4. Discuss Immediate Threat to Life issues missing
5. Overview of ASHE Member Tools Task Force (MTTF)
6. Final Prioritization of Topics
7. Presentation on Getting More Involved with ASHE Advocacy
8. Review Top 30 for assignments, schedule and tools

Introductions

NFPA Update

NFPA Update

Health Care Section (HCS)

HCS – Codes & Standards Review Committee

Participation on Committees

Health Care Interpretation Task Force (HITF)



NFPA Healthcare Section – Executive Board

Chair

James S. Peterkin, PE, LEED AP
TLC Engineering for Architecture

1st Vice Chair

Skip Gregory, NCARB
Health Facility Consulting

2nd Vice Chair

Doug Beardsley
Care Providers of Minnesota

Secretary

Chad E. Beebe, AIA, SASHE, CHFM, CFPS, CBO
American Society for Healthcare Engineering

Officers

Kenneth Daily
Elder Health Care Systems Group

Phillip Hill
Principle Long Term Care, Inc.

Roy LeNeave
American Healthcare, LLC
Colin McKay, CFPS

RPA, A Jensen Hughs Company
Steve Spaanbroek, MBA, FASHE, CHC, CHFM

MSL Healthcare Partners, Inc.

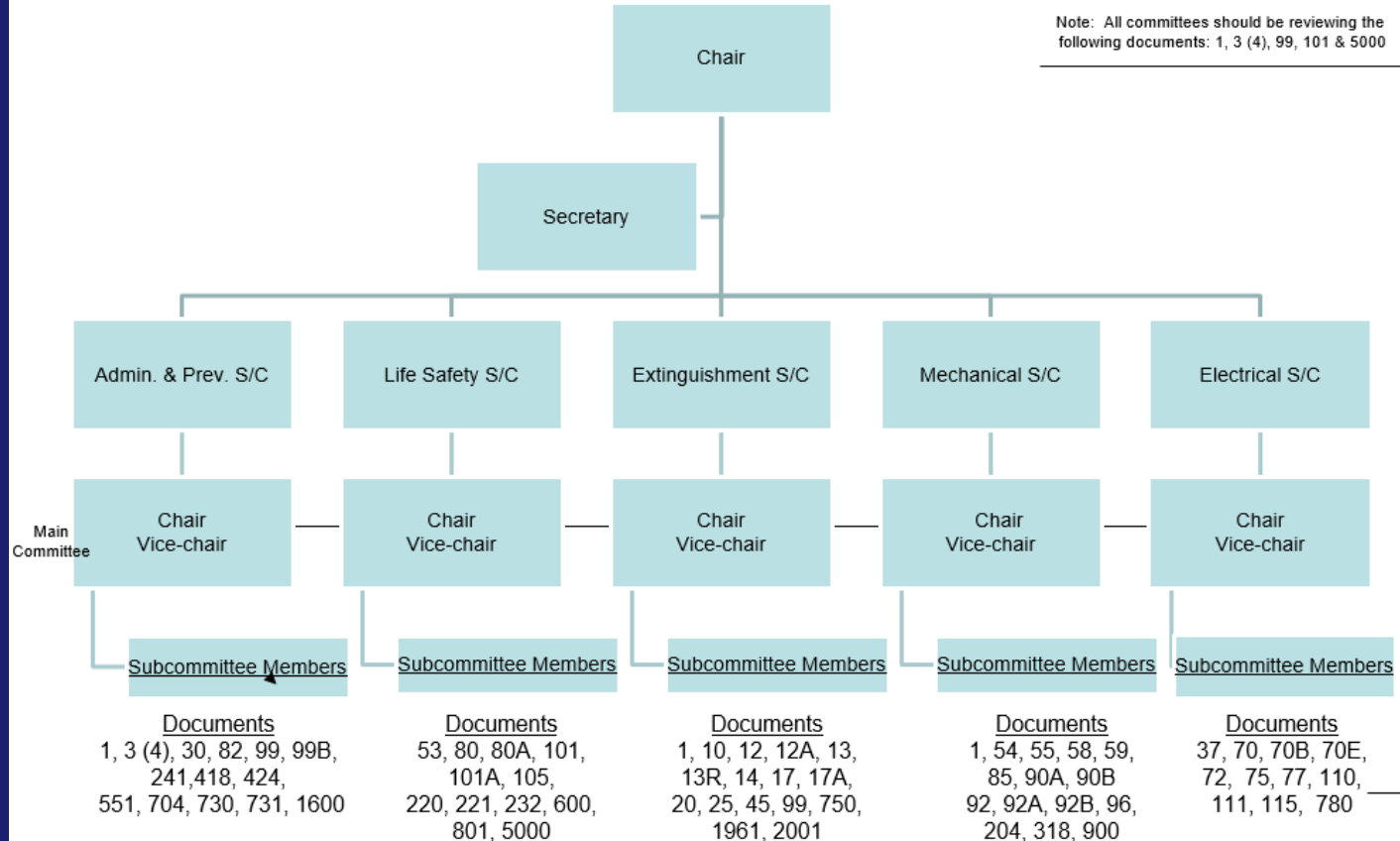
Immediate Past Chair

David A. Dagenais, BS, FASHE, CHFM, CHSP
Wentworth-Douglass Hospital



HCS Codes & Standards Review Committee

Note: All committees should be reviewing the following documents: 1, 3 (4), 99, 101 & 5000



Participation on Technical Committee

Committee's already represented:

NFPA 1

NFPA 10

NFPA 25

NFPA 70

NFPA 72

NFPA 80

NFPA 82

NFPA 90A

NFPA 99

NFPA 101 and 101 A

NFPA 105

NFPA 110 & 111

NFPA 241

NFPA 451

NFPA 730 and 731

NFPA 5000

Committee's needing representation: (?)

NFPA 3

NFPA 4

NFPA 13

NFPA 20

NFPA 55

NFPA 72 (additional sub-committees)

NFPA 75

NFPA 92

NFPA 115

NFPA 418

NFPA 551

NFPA 801

NFPA 915

NFPA 1600

NFPA 2001

Participation on Technical Committee

Committee's already represented:

NFPA 1

NFPA 10

NFPA 25

NFPA 70

NFPA 72

NFPA 80

NFPA 82

NFPA 90A

NFPA 99

NFPA 101 and 101 A

NFPA 105

NFPA 110 & 111

NFPA 241

NFPA 451

NFPA 730 and 731

NFPA 5000

Committee's needing representation: (?)

NFPA 3

NFPA 4

NFPA 13

NFPA 20

NFPA 55

NFPA 72 (additional sub-committees)

NFPA 75

NFPA 92

NFPA 115

NFPA 418

NFPA 551

NFPA 801

NFPA 915

NFPA 1600

NFPA 2001

Current Code activity

Cycle 2020

- *NFPA 1*
- *NFPA 99*
- *NFPA 101*

Cycle 2021

- *NFPA 80*
- *NFPA 110*
- *NFPA 241*

Cycle 2022

- *NFPA 25*
- *NFPA 70*

Healthcare Interpretations Task Force (HITF)

MISSION: To provide consistent interpretations on national codes and standards referenced by CMS, JCAHO and state and territorial authorities having jurisdiction. This will be accomplished through the evaluation of field conditions, surveyor/inspector/fire marshal interpretations, and questions by consumers of these services generated through a member of the task force.

Streamlining Interpretations For Healthcare Fire Protection Issues

Project Manager: Gregory E. Harrington

- Charter and Bylaws
- Agendas/Minutes
- Interpretations
- Membership

<https://www.nfpa.org/Codes-and-Standards/Standards-development-process/Technical-Committees/Advisory-and-Non-NFPA-Committees/Healthcare-Interpretations-Task-Force>

HITF – Healthcare Interpretations Task Force

The 15 member organizations are:

- American Health Care Association (AHCA)
- American Society for Healthcare Engineering (ASHE)
- Centers for Medicare & Medicaid Services (CMS)
- Department of Defense (DoD)
- Department of Veterans Affairs (VA)
- Det Norske Veritas Healthcare (DNVH)
- Healthcare Facilities Accreditation Program (HFAP)
- Indian Health Service (IHS)
- International Fire Marshals Association (IFMA)
- The Joint Commission (TJC)
- National Fire Protection Association (NFPA)
 - Gregory E. Harrington, P.E. – NFPA Staff (Principal)
- State Health Care Agency (SHA)
- Chair - Life Safety Code Committee on Healthcare Occupancies
- Chair - Healthcare Facilities Correlating Committee
- Chair - NFPA Health Care Section

HITF – Example

HITF INTERPRETATION REQUEST JUNE 2018

Document to be interpreted:

NFPA 101

Edition:

2012

Subject:

Security Systems in Stairs

QUESTION:

Can security systems and devices (for example, card sensors, cameras, motion sensors) be installed within exit stair enclosures (with penetrations properly fire stopped and wiring in metal conduit) to provide for proper facility protection and monitoring?

ANSWER:

YES.

HITF – Example



NEWS RELEASE

For immediate release

Contact: Lorraine Carli
Public Affairs Office: +1-617-984-7275
publicaffairs@nfpa.org

NFPA develops guidance to address fire and life safety challenges in temporary and traditional health care facilities

April 3, 2020 – With an anticipated surge of COVID-19 patients in communities nationwide, health care locations are being modified to provide more beds, existing buildings are being repurposed, and temporary structures are being put into service to meet impending demands. In response, the [National Fire Protection Association](#) (NFPA) has created [two immediate resources](#) to help health care engineers, designers, and authorities having jurisdiction (AHJ) provide the safest levels of fire and life safety possible as these unprecedented circumstances continue to evolve and emerge.

HITF - COVID Response

Maintaining safe health care facilities in extraordinary times



Fact sheet

It is becoming clear that the current capacity of the nation's hospitals will not be enough to care for the number of critically ill patients expected in many areas. This means that existing health care locations need to be modified to provide more beds, additional spaces need to be created from repurposed existing buildings, or temporary structures need to be constructed.

[Download the fact sheet](#)

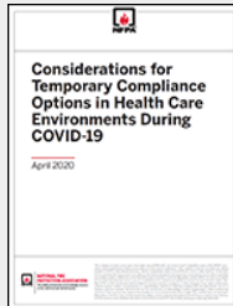


Webinar

In this webinar, NFPA technical experts discuss and answer questions on how to use the current codes as guidance and what temporary modifications to consider while balancing life safety and fire safety in preparing these health care facilities.

[Watch now](#)

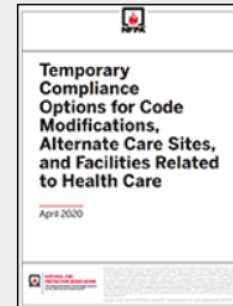
White papers



Considerations for Temporary Compliance Options in Health Care Environments During COVID-19

This information includes some compliance options for consideration based on feedback from authorities having jurisdiction (AHJs), officials at the state and local level, health care industry professionals, and other stakeholders.

[Download the white paper](#)



Temporary Compliance Options for Code Modifications, Alternate Care Sites, and Facilities Related to Health Care

This white paper provides greater context to associated considerations and measures around construction, prevention, detection and notification, egress, and automatic sprinkler systems.

[Download the white paper](#)

Immediate Threat to Life Additions

ASHE Member Tools Task Force (MTTF) Overview

Process

- Each year it continues to become more refined
- Establish a group of volunteers
- Develop topics
- Schedule, Write & Develop!

2020 Overview

- 2020
 - 25 Articles
 - 10 Tools
 - 1 Videos
 - 2 Surveys
- 2019
 - 18 Articles
 - 10 Tools
 - 5 Videos
- 2018
 - 12 Articles
 - 8 Tools
 - 2 Surveys
 - 1 Video



Tools Downloaded

- Top 1 and 2 are MTTF tools
- 6 of top 10 are MTTF tools

Event Label	Total Events
	742 % of Total: 0.07% (1,083,050)
1. ashe firedrillmatrix conditionalformatting 08.10.2020	122 (16.44%)
2. preventivemaintenancetasks	74 (9.97%)
3. medical_air_and_oxygen_capacity_assessment_tool_5.28.20.xlsm	72 (9.70%)
4. 1135 waiver template	46 (6.20%)
5. ashe lifesafetyriskassessmentfinal	42 (5.66%)
6. fire door checklist	34 (4.58%)
7. 1135 waiver template itm recommendation%20table	33 (4.45%)
8. pre disaster critical infrastructure self assessment	33 (4.45%)
9. ip ls checklist	31 (4.18%)
10. ashe mttf central_station_v_proprietary_service_tool	30 (4.04%)

Articles

- Lack of Proactive code development
- Refurbished Electrical Equipment
- Varying Times for Fire Drills
- Wires Touching Sprinkler Pipe
- Clear Interpretation of Special Locking
- Ligature Issues
- Surveyor Consistency
- Nitrous Oxide outside of OR
- Difference Between Central Station and Priority Monitoring
- Definition of Fire Watch
- O2 tanks storage/full/empty
- OR Temp/Humidity code variations
- Cameras in Stairwells
- Propane Refrigerant Management

Tools Developed

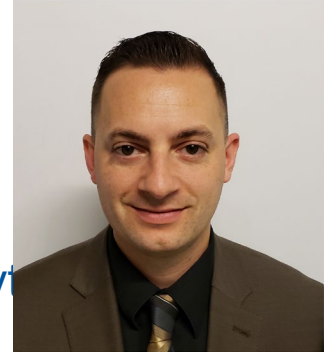
- Fire Drill Matrix
- Clear Interpretation of Special Locking
- Comparison Between Central Station and Priority Monitoring
- Definition of Monthly
- Water Management Plan Action Levels
- Nitrous Oxide outside of OR
- Fire Watch
- O2 tanks storage/full/empty
- OR Temp/Humidity code variations

ADVOCACY COMPLIANCE TOOLS

2021 – What's to Come

Chair: Frank D. Rudilosso, P.E., M.Eng, CHSP

- Director Facilities Regulatory Readiness at New York-Presbyterian



Vice-Chair: Lennon Peake, P.E., M.Eng, CHSP

- Director at Koffel Compliance



2021 – What's to Come

- Prioritize Topics
- Access and promote the MTTF tools
- Be aware of future MTTF tool development
- Get involved
 - [ASHE Regulatory Affairs Volunteer Form](#)



QUESTIONS?

How to Get Involved in the Advocacy Process

Advocacy Liaison



ASHE's Advocacy Highway is a two-way street of communication on advocacy issues between ASHE and local ASHE-affiliated chapters.

ASHE provides help to chapter leaders looking to improve codes and standards in their states and regions, and advocacy liaisons within local chapters inform ASHE about policy and legislation affecting the health care physical environment.

Purpose – The Advocacy Liaisons are representatives from each Chapter that serve as a direct communications link between ASHE and the local Chapters as a conduit to provide information from the Chapters back to ASHE and to distribute to the Chapters information from the ASHE Advocacy staff.

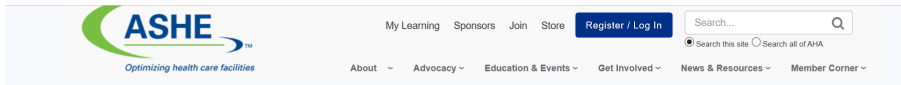
Communication Within Chapter

- Address chapter during monthly meetings
 - Review HFM Insider emails
 - Summarize Advocacy Liaison quarterly conference calls to Chapter
- Brief articles in chapter communications
- Present ASHE initiatives at Chapter conferences

ASHE Website Advocacy Links



Volunteering



Apply to Volunteer with ASHE

Help influence positive change in the health care environment and **ADVANCE YOUR CAREER** by volunteering with ASHE



The volunteer database is used to identify individuals who are willing to work with ASHE on special projects (e.g., beta-testing ASHE programs; identifying speakers; and participating in focus groups and committees) and task forces.

These are just a few of the opportunities that may be available to you as an ASHE volunteer.

Help ASHE meet the ever-changing needs of its membership by applying to volunteer your services. Take a few minutes to fill out the volunteer questionnaire so your name can be added to the growing pool of content experts and contributors willing to share their time and talents.

Help us shape the future of our society while serving your profession. Now is the time to get involved and be active as we work together to optimize the health care physical environment.

[Apply to Volunteer](#)

SELECT HERE



VOLUNTEER WITH ASHE



Thank you for your interest in volunteering for ASHE. As a membership organization, ASHE relies on volunteer participation to drive our profession forward. We know your time is important and your participation is appreciated.

The My ASHE online community includes a volunteering section that allows members to contribute their time and talent. My ASHE makes it easy to identify your volunteer preferences and to participate in volunteer opportunities.

Opting In to the Volunteer Pool

Being part of the volunteer pool means that you are interested in learning about future volunteer opportunities available through ASHE. When you're opted into the pool, you will receive email alerts as soon as a new opportunity opens up that matches your qualifications and interests.

Opting in is easy- with one click, you are added to ASHE's pool of volunteers. This means that when new opportunities come up, you'll be the first to learn about them. Once opted in, you can of course suspend your opt-in request at any time. Just set the *invite me to volunteer when opportunities match my expertise?* toggle from "Yes to 'No' on your volunteer profile to no longer receive invitations.

Opting in is easy- with one click, you are added to ASHE's pool of volunteers. This means that when new opportunities come up, you'll be the first to learn about them. Once opted in, you can of course suspend your opt-in request at any time. Just set the *invite me to volunteer when opportunities match my expertise?* toggle from "Yes to 'No' on your volunteer profile to no longer receive invitations.

[Click here to opt in to the Volunteer Pool](#)

Your Volunteer Profile

Completing your volunteer profile will help us know what kind of volunteer opportunities you are interested in. You can also opt out of receiving any future communications about opportunities from your volunteer profile.

Complete [our Volunteer Profile](#) so that we can connect you with future volunteer opportunities for which you are a good match.

Open Opportunities

Check out the current list of volunteer opportunities! The full listing of volunteer posting is available through [the Volunteer Opportunities List](#).

Earn Volunteer Badges!

By becoming a volunteer, you can also rack up "My ASHE Points," earning you badges for your My ASHE profile along the way. These points and badges are meant to be a fun way to track your level of engagement in ASHE's volunteer program, and stir competition among friends. Learn more about each level below.

Volunteering

Earn Volunteer Badges!

By becoming a volunteer, you can also rack up "My ASHE Points," earning you badges for your My ASHE profile along the way. These points and badges are meant to be a fun way to track your level of engagement in ASHE's volunteer program, and stir competition among friends. Learn more about each level below.



1 = Self-Starters
10 My ASHE Points

You can earn self-starter status by participating in a number of volunteer opportunities—including short tasks or online tasks that don't require time away from home. These quick volunteering opportunities are perfect for busy professionals who want to get plugged into the ASHE community.



2 = Go-Getter
150 My ASHE Points

Continue to volunteer with ASHE and you can earn the go-getter badge. By contributing your time and energy to a variety of volunteer opportunities, you can earn points toward this status while sharing your knowledge with other ASHE members.



3 = Star Performer
300 My ASHE Points

Star performers help ASHE meet its mission in a variety of ways, from serving on task forces to helping with advocacy efforts. Star performers typically have a solid history of volunteer participation and increasingly take on larger or more in-depth assignments.



4 = Stellar Standout
500 My ASHE Points

Continue making an impact on the ASHE community by providing leadership over a longer period of time and earning points toward the stellar standout badge. Stellar Standouts have contributed their expertise to the field over time.



5 = Distinguished Volunteer
1,000 My ASHE Points

Distinguished volunteers are a key part of ASHE's volunteer program. They contribute their time and talent to ASHE initiatives, including long-term and time-consuming activities, and help ASHE optimize the health care physical environment. Distinguished volunteers often help steer the organization and want to give back to the field after accumulating years of experience.

Compliance Tools

www.ashe.org/tools?type=1145

- Fire Watch Tool
- Fire Drill Matrix Tool
- Fire Door Checklist
- Template for Submitting ITM Waivers to CMS
- How to Submit NFPA Public Inputs and Public Comments
- iSpy videos
- Life Safety Device Decommissioning Tool
- Environment of Care Documentation Checklist
- Fire Alarm ITM
- Safety Guy Makes Holidays Safer

National Fire Protection Association (NFPA)

- Membership
 - \$200 / year
 - Vote on disputed Code changes (Certified Amending Motions) at annual conference
 - Majority vote rules
 - Receive document email alerts
 - www.youtube.com/watch?v=T2bS8CEoG60
- Committee Participation
- Submit Public comments
 - www.youtube.com/watch?v=BEIAROofjhE
- Submit Public Inputs
 - www.youtube.com/watch?v=wkcucG6uKgo

NFPA 10 Portable Fire Extinguishers Update

- Proposed to reduce inspection frequency from Monthly to Quarterly / Semi – annually
 - Not approved during First Draft meeting
 - Created a Committee Input (CI) at the First Draft meeting to seek Public Comment (PC)
 - CI sought to allow Performance Based approach to determine inspection frequency
 - CI did not include proposed language reviewed during meeting
 - Approximately 2 dozen PC were submitted in favor of the CI – THANK YOU !
 - CI failed since language was not included and considered new material which the public did not have the opportunity to comment on
 - Lesson Learned – Know the rules !!!
 - Potentially could have modified Second Draft report
- Annual maintenance can now also serve as monthly inspection
- Rated fire extinguisher cabinet changes for existing installations failed



Thank you!

© 2020 American Society for Health Care Engineering,
a professional membership group of the American Hospital Association
155 N. Wacker Drive, Suite 400 | Chicago, IL 60606
ashe.org | ashe@aha.org | 312-422-3800

