



Optimizing health care facilities

Q3 ASHE Chapter Leader and Liaison Call

September 4, 2024

© 2024 American Society for Health Care Engineering,
a professional membership group of the American Hospital Association
155 N. Wacker Drive, Suite 400 | Chicago, IL 60606
ashe.org | ashe@aha.org | 312-422-3800



Advancing Health in America

Welcome!

Agenda

- New Chapter Tool
- Core Competency Framework and Chapter Contest
- Chapter Leadership Forum Chapter Advocacy Agenda
- NFPA Update
 - Concealed Sprinkler Data Collection
 - Cybersecurity Chapter NFPA 99
- FGI Update
- ASHRAE Update
 - 170
 - GP43
- ICC Update
 - Code Action Hearings #2
 - ASCE 24
- Sustainability and Decarbonization

Chapter Leader/Liaison Slide Deck

This slide deck will be shared on the “Chapter Communications and Meeting Recordings” page on ASHE.org.

The slide deck is intended to be used by the liaisons and chapter leaders to assist in sharing information with chapters. The slide deck is not to be shared with others.

By downloading the presentation slides, you agree to use it for sharing information purposes only.

New! Chapter Tool

Core Competency Framework and Chapter Contest

ASHE's Core Competency Framework

What Is The Framework?



A comprehensive conceptual model that outlines key aspects of health care facilities management to gain the expertise needed to provide patients and health care providers a safe, comfortable and cost-efficient environment

Powered by  ASHE



Learn More @ ashe.org/core

ASHE's Core Competency Framework

What Is The Framework?



A roadmap to ASHE education, publications, resources and tools that help professionals fill knowledge gaps to improve performance and support career advancement

Powered by  **ASHE**



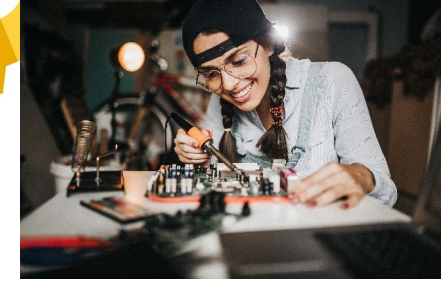
Learn More @ ashe.org/core

ASHE's Core Competency Framework

What Is The Framework Designed To Do?

Develop the Next Gen Workforce

Educate health care facility management professionals on the tasks required to direct, supervise and operationalize the optimization of the health care physical environment



ASHE's Core Competency Framework

What Is The Framework Designed To Do?

Connect Professionals with ASHE Resources

An intuitive frame to use when accessing the education, publications, tools and resources developed by the ASHE community to support operational optimization



ASHE's Core Competency Framework

What Is The Framework Designed To Do?

Provide Pathway to Obtain Industry-Recognized Credentials

A systematic, progressive learning model to support health care facility professionals to pursue ASHE's certifications:

- *Health Care Physical Environment Worker Certification*
- *Mechanic Evaluation and Certification for Health Care*
- *Certified Health Care Facility Manager Certification*



ASHE's Core Competency Framework

What are the Categories of the Framework?



Master essential skills such as:

- Policy/procedure development
- Documentation of integrated life safety inspection
- Compliance-related testing, maintenance, and documentation of facility-related systems
- Identification of the responsible facility authority for medical gas systems
- Maintaining the appropriate permits for work programs (ex. above ceiling, medical gases, hot work, etc.)

ASHE's Core Competency Framework

What are the Categories of the Framework?



Master essential skills such as:

- Identifying and promoting opportunities to utilize green and eco-friendly methods and technologies whenever possible
- Operationalizing a sustainability and energy use program
- Performing extensive initial commissioning and preventing declining efficiency through continuous commissioning
- Creating a long-range plan to recommission or retro-commission departments, floors or buildings

ASHE's Core Competency Framework

What are the Categories of the Framework?



Master essential skills such as:

- Managing budgets to be able to repair/replace necessary equipment when needed
- Demonstrating knowledge in budgeting, contract management, capital equipment, property and equipment leasing, and bidding
- Establishing facility-focused financial key performance indicators to measure and benchmark operational and capital expenditures
- Putting in place sustainable procurement practices focused on value vs. upfront costs

ASHE's Core Competency Framework

What are the Categories of the Framework?



Master essential skills such as:

- Benchmarking all systems and resources to monitor energy consumption
- Identifying and promoting opportunities to utilize sustainability-focused policies, procedures and technologies whenever possible
- Developing commissioning plans for all new equipment
- Designing a long-term system management plan to prevent declining efficiency through continuous commissioning

ASHE's Core Competency Framework

What are the Categories of the Framework?



Master essential skills such as:

- Acting as a good steward of human and capital resources
- Developing and documenting impactful key performance indicators (KPIs)
- Implementing effective strategic planning that aligns with organizational goals
- Maintaining emergency management program documentation, based on a hazard vulnerability analysis

ASHE's Core Competency Framework

What are the Categories of the Framework?



Master essential skills such as:

- Developing and implementing management plans, policies and procedures for risk categories
- Utilizing ICRA 2.0 and interim as well as alternate life safety measure programs
- Operation of the following programs:
 - fire safety management
 - all hazards emergency management
 - utility management (including utility incident response, water management and ventilation management programs)
 - worker safety
 - security management (including violence in the workplace, active shooter, cybersecurity and appropriate access)
 - hazardous materials program

ASHE's Core Competency Framework

What are the Categories of the Framework?



Master essential skills such as:

- Managing contracts
- Selecting proper construction delivery methods
- Using facility data to enhance/improve design, construction and operations
- Mitigating impacts to patient care and staff during construction (PICRA/ICRA/ILSM)
- Planning for an effective and seamless handoff between PDC and facility

ASHE's Core Competency Framework

What are the Categories of the Framework?



Master essential skills such as:

- Accurate prioritization of maintenance activities/strategies in accordance with best practice guidance, manufacturers' recommendations and industry standards
- Ensuring asset management programs allow for system uptime through reliability-centered maintenance
- Maintaining a clear inventory of all assets and prioritization of maintenance strategy
- Training staff to be able to maintain equipment and the spaces that equipment serves
- Operating with safe work practices

ASHE's Core Competency Framework

How Can my Organization and I Get Started Using the Framework?

On Your Own

- Sign-up for live or on demand ASHE training to improve skill gaps
- Read ASHE publications in each core competency category
- Use an ASHE tool/resource to complete a required task at work
- Volunteer on ASHE committees focused on core competency tool/resource development

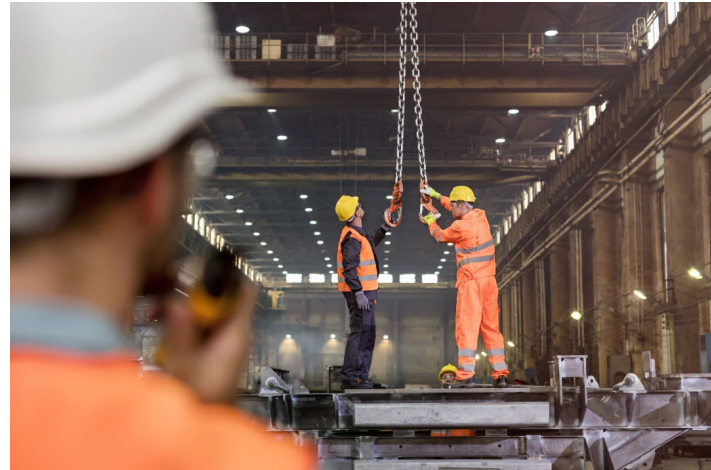


ASHE's Core Competency Framework

How Can my Organization and I Get Started Using the Framework?

On Your Team

- Schedule a Lunch & Learn using ASHE Facility Manager's Handbook discussion guides
- Frame mentor/mentee conversations around Core Competency Framework-related tasks & credential achievement
- Document Core Competency Framework-related case study & submit as proposal for upcoming ASHE in-person conference & exhibition



ASHE's Core Competency Framework

How Can my Organization and I Get Started Using the Framework?

At Your Organization

- Develop your chapter's education agenda to align with the Core Competency Framework
- Use the Core Competency Framework resources and training to achieve operational optimization
- Apply for ASHE awards & recognition to highlight the optimized level of achievement your organization has obtained



ASHE's Core Competency Framework

How Can my Organization and I Get Started Using the Framework?

At Your Chapter

- Participate in the ASHE Core Competency Chapter Awareness Campaign Contest
- Share information about ASHE's Core Competency Framework between **September 1 and November 1**
 - Newsletter
 - LinkedIn
- Be entered for a chance to win 25 eLearning seats for the [Building Success in Health Care Project Management](#) ASHE education program



ASHE Core Competency Chapter Awareness Campaign Contest

- Share information about ASHE's Core Competency Framework between **September 1 and November 1**.
- The content must be shared in the following formats:
 - 2x in a newsletter or dedicated email to chapter members
 - Add Jenny Hull to your distribution lists and ASHE will track it for you!
 - 2x on LinkedIn, X or Facebook
 - We encourage social posts to “tag” ASHE and include the #ASHECoreCompetencies hashtag so we can react and share.
 - Tagging ASHE will help us track this for you. If ASHE is not tagged, Chapters must send screenshots of social media posts to Jenny Hull (jhull@aha.org) to prove completion of this step.
- You can create your own text about the Core Competency Framework or edit and share from the template attached.
- All ASHE Chapters are eligible to enter the contest.

Chapter Leadership Forum Chapter Advocacy Agenda

Chapter Leadership Forum - Chapter Advocacy Agenda

Presentation at HFIC Chapter Leadership Forum

Development of a Chapter Advocacy Agenda

NFPA Update

NFPA Update

- Concealed Sprinkler Data Collection
- Advocacy Alert Issued
- Webpage established (<https://www.ashe.org/data-request-concealed-fire-sprinklers>)



Advocacy Alert

ASHE project aims to improve concealed fire sprinkler safety requirements

Share your data to help develop a practical method for testing

The American Society for Health Care Engineering (ASHE) has launched the [Concealed Sprinkler Data Collection Project](#), an initiative that actively gathers data on concealed fire sprinklers in order to enhance safety protocols.

Concealed sprinklers, defined in NFPA 13, Standard for the Installation of Sprinkler Systems, and referenced in NFPA 25, Standard for the Inspection, Testing, and Maintenance of Water-Based Fire Protection Systems, are designed with a cover plate to aesthetically blend into the ceiling, making them less obtrusive. However, this design necessitates periodic inspection to ensure the sprinklers are functional and won't activate prematurely. In 2022, the NFPA 25 committee proposed a five-year inspection interval of concealed sprinklers to align with other maintenance activities requiring similar equipment, thus optimizing resource utilization.

The NFPA 25 committee's decision recognized the need to develop a pragmatic approach to inspect the sprinklers that balances thoroughness with practical considerations of cost and effort for facility owners and inspectors.

Please share data on your facilities' concealed fire sprinklers so that ASHE can help the committee develop practical sprinkler testing requirements. By sharing your data, ASHE can recommend to NFPA testing requirements that optimize resource utilization in health care facilities while ensuring safety.

To get started recording and submitting your data, visit the [Concealed Sprinkler Data Collection Project webpage](#).

Share Data »



NFPA Update

Requesting data to help develop a practical method for ensuring concealed fire sprinklers remain functional

CALL TO ACTION

Request Chapter Facilities to Participate

NFPA Update

Cybersecurity Chapter NFPA 99

Developing chapter

If interested in participating contact Chad Beebe cbeebe@aha.org

FGI Update

FGI Update

- First Drafts of 2026 *FGI Facility Code for Hospitals*, *FGI Facility Code for Outpatient Settings*, and *FGI Facility Code for Residential Care and Support Settings* were issued July 1st
- New format includes only mandatory code language
 - Appendix language moving to new Handbook currently under development
- Currently seeking public comments on First Draft until September 30
- Will need review and input from all
- ASHE Advocacy Alert going out September 9
 - Will alert members to specific sections to review

ASHRAE Update

ASHRAE/ASHE Standard 170

Addendum k 3rd Public Review opening 6 Sept – 6 Oct

Adds requirement for cooling reserve capacity based on needs

Addendum n published

Included international testing methods for HEPA filters

Addendum o published

Adds spaces to align with FGI

ASHRAE/ASHE Standard 170

Addendum p – 1st PPR – No Comments

Aligns the requirements for similar functional spaces across the tables within the following recommended changes

Addendum q – 1st PPR – No Comments

Adds a requirement that emergency conditions be considered in the design of the HVAC systems

ASHRAE/ASHE Guideline 43

Responses to comments for 2nd PPR
Voted upon by committee and being processed

Expect an Independent Substantive Change public review
Mid-October

Will be announced within ASHE Insider

ICC Update

ICC Update

Committee Action Hearing 2

Scheduled for Oct 23rd – Oct 31st

Committee on Health Care will be participating

ASCE 24 Public Review

- Referenced within IBC
- Expanding MRI* for all design classes – Current requirements:
 - Class 1 current DFE*
 - Class 2 BFE* +1 or DFE
 - Class 3 BFE +1 or DFE
 - Class 4 BFE +2, DFE or 500-year
- Open for Public Comment
 - 26 September

Table 1-3. FE_{MRI} for Flood Hazard Areas with Noncoastal Flood Sources[†]

Flood Design Class	MRI	Method A: MRI Data are Available or Site-Specific/Local Study is Prepared	Method B: 100-Year and 500-Year Flood Elevations are Available	Method C: Only 100-Year and 10-Year Flood Elevations are Available	Method D: Only 100-Year Flood Elevation is Available	Method E: 100-Year Flood Elevation is Not Available
1	100-Year	FE_{100}	FE_{100}	FE_{100}	FE_{100}	100_{com}
2	500-Year	FE_{500}	FE_{500}	$FE_{100} + 0.70(FE_{100} - FE_{10})$	$FE_{100} + 2.1 \text{ ft}$ (0.6 m)	$100_{com} + 2.1 \text{ ft}$ (0.6 m)
3	750-Year	FE_{750}	$FE_{100} + 1.25(FE_{500} - FE_{100})$	$FE_{100} + 0.90(FE_{100} - FE_{10})$	$FE_{100} + 2.6 \text{ ft}$ (0.7 m)	$100_{com} + 2.6 \text{ ft}$ (0.8 m)
4	1000-Year	FE_{1000}	$FE_{100} + 1.43(FE_{500} - FE_{100})$	$FE_{100} + (FE_{100} - FE_{10})$	$FE_{100} + 3.0 \text{ ft}$ (0.9 m)	$100_{com} + 3.0 \text{ ft}$ (0.9 m)

[†] FE_{100} , FE_{500} , FE_{750} , and FE_{1000} are the flood elevations for the indicated MRIs.

○ Mean Recurrence Interval - Reciprocal of the annual probability of exceedance; the average time, in years, between hazard events that equal or exceed a given magnitude, based on probability and statistical analysis

- Design Flood Elevation: Elevation of the design flood, including wave height, relative to the datum specified on the community's flood hazard map.
- Base Flood Elevation: Elevation of flooding, including wave height, having a 1% chance of being equaled or exceeded in any given year (100-year flood elevation).

ASCE 24 Public Review

- **Class 1**

- Buildings normally unoccupied and pose minimal risk to the public or community
- Temporary structures, Accessory storage structures, Parking structures, Agricultural structures

- **Class 2**

- Pose a moderate risk or disruption to the public or community except those listed in Classes 1, 3 or 4
- Vast majority of buildings and structures not specifically assigned to other classes, residential, commercial or industrial

- **Class 3**

- Pose a high risk or significant disruption to the public or community includes: Where large numbers of persons assemble, Theaters, Lecture Halls, Concert Halls, Religious Institutions, Museums, Community Centers, Athletic facilities, Schools, Jails, **Healthcare Facilities without surgery or emergency treatment capabilities, Care facilities with residents**

- **Class 4**

- Pose a high risk or significant disruption to the public or community includes: **Healthcare Facilities with surgery or emergency treatment capabilities**, Fire, rescue, ambulance and police stations, Designated emergency shelters, Power generating facilities, Critical aviation facilities

Sustainability and Decarbonization

AMC Sustainability Interest Group

- Collaborative community supported by ASHE, the Association of American Medical Colleges (AAMC), and Practice Greenhealth
 - Bimonthly meetings to connect on critical topics of sustainability and climate action specific to academic medicine.
 - Online platform to connect, share, and learn virtually.
 - Over 350 current members.
 - In-person opportunities at national meetings such as CleanMed, ASHE Conferences, and AAMC Annual Meeting.

AMC Sustainability Interest Group

- Last event was held Tuesday, June 25th.
 - Welcomed a guest speaker who presented on sustainable science and greening laboratories.
 - Recording is available in the online community
- If you, or members of your chapter, are affiliated with an Academic Medical Center and wish to get involved, reach out to awallace@aha.org for more details.

AHA Sustainability Webinar Series

- Monthly webinar series aiming to launch in November.
- Focused on financing sustainability projects through the Inflation Reduction Act (IRA).
- Nov – “Making the Case” – Mintz Renew Energy Partners, KPMG, Hackensack Meridian Health
- Dec *or* Jan – “Financial Perspective” – Deloitte and Common Wealth Fund
- Jan *or* Feb – Panel on IRA 179D
- Feb *or* March – Case studies & lessons learned from health systems

AHA Sustainability Podcast Series

- Launch in January 2025
- Episodes posted monthly
 - Variety of topics centered on sustainability in health care

- Details on both the Webinar and Podcast Series will be shared on HFM Insider

Sustainability Publications

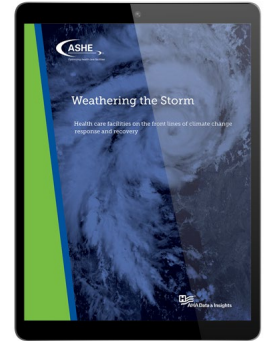
- **ASHRAE/ASHE Decarbonizing Hospital Buildings Guidebook**

- Detailed exploration of Scope 1, 2, & 3 emissions
- Integration of ASHRAE standards with carbon accounting
- Calculating and reducing operational and embodied carbon
- Decarbonization case studies

- **Weathering the Storm: Health care facilities on the front lines of climate change response and recovery**

- FM testimonies responding to climate driven natural disasters
- Best practices for preparing for future weather events
- Outlines nation-wide decarbonization mandates
- How-to tackle Scope 2 emissions

- **Upcoming in Q4- Decarbonizing Existing Hospital Case Study**



2024 Meeting Dates and Upcoming Events

2024 Chapter Leader and Liaison Calls

2024 CL/L Call Dates

Q4: Wednesday, December 4, 2024

All calls begin at 12:05 noon CT.

Call reminders – Chapter Calendar and the Liaison SharePoint site

ashe.org/chapters/calendar

Save the Date!



**HEALTH CARE FACILITIES™
INNOVATION CONFERENCE**

July 27-30, 2025 | Columbus, OH

Questions or Discussion?





Thank you!

© 2024 American Society for Health Care Engineering,
a professional membership group of the American Hospital Association
155 N. Wacker Drive, Suite 400 | Chicago, IL 60606
ashe.org | ashe@aha.org | 312-422-3800



Advancing Health in America